

# Wooden facade apartment houses Buchegg, Zürich

2017



In Zurich Wipkingen, the Waidberg building cooperative replaced an existing housing estate from the 1930s. Timbatec was responsible for all timber engineering services for the facades of the three apartment buildings with 110 apartments.

## The project

Attractive cooperative apartments with more living space were built on the highly frequented Bucheggplatz. Thanks to an increased utilization rate and revised building regulations, the buildings are larger and higher than their predecessors. Rooms such as kitchens, dining rooms and staircases face the street. Thus, the private living rooms and bedrooms are better protected from noise. The floor plan is chosen in such a way that frontal views into the opposite apartments are avoided. Towards the south, the apartments open onto a spacious inner courtyard, which is optimally protected from street noise.

## The construction

The basement and basement level are built in solid construction. The floors above are also built in solid construction except for the outer wall. The exterior building envelope is made of wooden elements. It was erected floor by floor together with the solid construction and thus serves as face shuttering for the concrete floors. This saves time and reduces the cost of scaffolding.

## The challenge

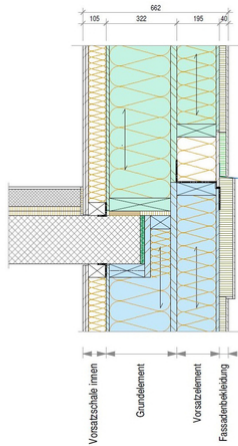
The facade is characterized by the gradation shown to the outside, defined in three levels, and the windows, which are also staggered in depth. The waterproofing of the facade was therefore also the big challenge, bringing together, sealing and cladding the stepped facade levels.



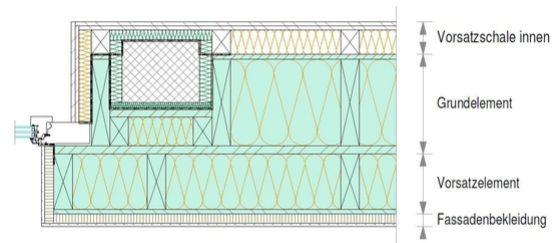
Apartment house with construction site scaffolding



Detail insulation on window sill



Detail facing shell



Horizontal section through concrete column

### Construction Data

- Frame construction scantlings 265 m<sup>3</sup>
- Insulation 10'492 m<sup>2</sup>
- Three-layer boards 6'570 m<sup>2</sup>
- OSB boards 5'953 m<sup>2</sup>

### Services of Timbatec

- SIA phase 31 preliminary project
- Cost estimate
- SIA Phase 32 Construction project
- SIA Phase 51 Implementation project
- SIA Phase 41 Tendering and comparison of offers
- Fire protection planning
- Statics and construction
- Site supervision and site inspections

### Timber Construction Engineer

Timbatec Holzbauingenieure Schweiz AG

### Architect

DUPLEX Architekten AG  
8008 Zurich

### Building consultant

Basler & Hofmann AG  
8008 Zurich

### Building owner

Baugenossenschaft Waidberg  
8037 Zurich

### Construction management

abp Architekten  
8406 Winterthur

### Construction management

GMS Partner AG  
8058 Zurich